

# ETASOL®

EUROPEAN MANUFACTURER OF SOLAR FASTENING SYSTEMS



**LOGO**



**Anti-theft safety screw**  
Anti-theft protection & personalisation

**Fixings Systems**

# ETASOL®

EUROPEAN MANUFACTURER OF SOLAR FASTENING SYSTEMS



## Your partner for solar fastening systems

ETASOL® from ETANCO® has complete and innovative fastening systems for the safe connection of stands for solar and photovoltaic installations on all industrial roofs with trapezoidal steel sheets, sandwich elements, fibre cement corrugated sheets or tiles. The service and the technical competence at the site of construction is the ultimate decisive factor for a smooth execution of your solar projects.

## Our metier

50 years of experience in creating high quality and innovative system solutions in fastening technology for the construction industry.

## Our Service

The competence and professionalism through our onsite technical consultants.

The quality and concept of our fastening systems for solar technology guarantee a long life span and safety against static structural loads. With a strong practice orientation, our products can be installed quickly and easily.

The ETASOL® solar systems are either approved as per the general technical approval procedures or tested to comply with the TÜV-certificate.



## New in the ETASOL® delivery program

The personalised ETASOL® anti-theft-safety screw protects solar modules against theft.



## ETASOL® Anti-theft-safety screw made of stainless steel A2

The brand new ETASOL® DSS anti-theft-safety screw made of stainless steel A2 is a very innovative and safe solar screw for assembling your solar modules.

**ETASOL® DSS M8 X L**  
for securing solar clamps on  
aluminium profiles against theft



ETASOL® Anti-theft-safety screw DSS A2	Dimension	VPE/Unit	Art. No.
ETASOL® DSS	M8 x 16	100	345.516
ETASOL® DSS	M8 x 20	100	345.520
ETASOL® DSS	M8 x 25	100	345.525
ETASOL® DSS	M8 x 30	100	345.530
ETASOL® DSS	M8 x 35	100	345.535
ETASOL® DSS	M8 x 40	100	345.540
ETASOL® DSS	M8 x 45	100	345.545
ETASOL® DSS	M8 x 50	100	345.550
ETASOL® DSS	M8 x 55	100	345.555
ETASOL® DSS	M8 x 60	100	345.560
ETASOL® DSS	M8 x 65	100	345.565
ETASOL® DSS	M8 x 70	100	345.570

Other lengths and ø on request

## ETASOL® Drive nutsetter

**ETASOL® VS**  
for securing solar clamps on aluminium profiles against theft



ETASOL® Drive nutsetter VS	Diametre	VPE/Unit	Art. No.
ETASOL® Drive nutsetter	Ø 13 mm	10	137.871

Other lengths and ø on request

### Your benefits:

- **Safe against theft:** The screws cannot be unfastened with a conventional screwdriver.
- **can be dismantled:** if the solar module needs to be dismantled, it can be done only with the special ETASOL® Drive nutsetter.
- **Exclusive:** ETASOL® guarantees to the customer the exclusiveness of the header shape.
- **Personalisation:** ETASOL® develops a personalised header shape in a customer specific manner (logo or lettering), inclusive of the drive nutsetter or header

## ETASOL® Solar fastener for steel Type B made of stainless steel A2

**ETASOL® B 8.0 X L + 50 (M10) with E19 or  
Pilzdichtung sealing washer PLD for fastening  
photovoltaic and solar installations on steel**



ETASOL® Solar fastener of Type B 13/5	SW	Clamping area (mm)	VPE/Unit	Art. No.
ETASOL® B 8.0 x 80 + 50 E19 with saddle washer		15 - 65	10	100.080
ETASOL® B 8.0 x 100 + 50 E19 with saddle washer		35 - 85	10	100.100
ETASOL® B 8.0 x 125 + 50 E19 with saddle washer		60 - 110	10	100.125
ETASOL® B 8.0 x 150 + 50 E19 with saddle washer		85 - 135	10	100.150
ETASOL® B 8.0 x 160 + 50 E19 with saddle washer		95 - 145	10	100.160
ETASOL® B 8.0 x 200 + 50 E19 with saddle washer		135 - 185	10	100.200
ETASOL® B 8.0 x 80 + 50 PLD Ø 25		10 - 60	10	101.080
ETASOL® B 8.0 x 100 + 50 PLD Ø 25		20 - 80	10	101.100
ETASOL® B 8.0 x 125 + 50 PLD Ø 25		55 - 105	10	101.125
ETASOL® B 8.0 x 150 + 50 PLD Ø 25		80 - 130	10	101.150
ETASOL® B 8.0 x 160 + 50 PLD Ø 25		90 - 140	10	101.160
ETASOL® B 8.0 x 200 + 50 PLD Ø 25		130 - 180	10	101.200

**General technical approval obtained.**

**All products including the sealing washer PLD Pilzdichtung or sealing washer E19 with saddle washer  
(as per the profile drawings) and**

**1x nut DIN 934**

**1x self-locking nut DIN 985**

**2x u-washers DIN 125**

<b>Technical notes:</b>	<b>Steel thickness</b>	<b>Pre-drill ø</b>
	1.5 bis 5.0 mm	6.8 mm
	6.0 mm	7.0 mm
	8.0 mm	7.2 mm
	ab 10 mm	7.4 mm

**For immediate delivery**

**Other lengths / headless screw with 70 mm on request**

## ETASOL® Solar fastener for wood

### Type A made of stainless steel A2

ETASOLA 8.4 x L + 50 (M10) with E19 or sealing washer PLD for fastening photovoltaic and solar installations on wood



ETASOL® Solar fastener of Type A 13/5	SW	Clamping area (mm)	VPE/Unit	Art. No.
ETASOL® A 8.4 x 80 + 50 E19 with saddle washer		10 - 50	10	103.080
ETASOL® A 8.4 x 100 + 50 E19 with saddle washer		30 - 70	10	103.100
ETASOL® A 8.4 x 130 + 50 E19 with saddle washer		60 - 90	10	103.130
ETASOL® A 8.4 x 150 + 50 E19 with saddle washer		75 - 100	10	103.150
ETASOL® A 8.4 x 180 + 50 E19 with saddle washer		100 - 130	10	103.180
ETASOL® A 8.4 x 200 + 50 E19 with saddle washer		130 - 150	10	103.200
ETASOL® A 8.4 x 80 + 50 PLD Ø 25		10 - 40	10	104.080
ETASOL® A 8.4 x 100 + 50 PLD Ø 25		20 - 60	10	104.100
ETASOL® A 8.4 x 130 + 50 PLD Ø 25		45 - 80	10	104.130
ETASOL® A 8.4 x 150 + 50 PLD Ø 25		70 - 100	10	104.150
ETASOL® A 8.4 x 180 + 50 PLD Ø 25		100 - 125	10	104.180
ETASOL® A 8.4 x 200 + 50 PLD Ø 25		120 - 145	10	104.200

General technical approval obtained.

All products inclusive of sealing washer PLD or sealing washer E19 with saddle washer (as per the profile drawings) and

1x nut DIN 934

1x self-locking nut DIN 985

2x u-flat washer DIN 125

Technical notes:           Pre-drill with  $\varnothing$  6.0 mm  
                                  Anchoring depth = 4 to 12 x  $\varnothing$

For immediate delivery

Other lengths / headless screw with 70 mm on request

## ETASOL® Hanger bolts for wood made of stainless steel A2

### ETASOL® STS/STSM M10 (SW7) or M12 (SW8/SW9)

for securing photovoltaic and solar installations on wood



STS STSM

ETASOL® Hanger bolts A2	Clamping area (mm)	VPE/Unit	Art. No.
ETASOL® STS M10 x 200	70	50	102.200
ETASOL® STS M10 x 250	120	50	102.250
ETASOL® STS M10 x 300	170	50	102.300
ETASOL® STS M12 x 250	120	50	120.250
ETASOL® STS M12 x 300	170	50	120.300
ETASOL® STS M12 x 350	220	50	120.350
ETASOL® STSM M10 x 200	70	25	105.200
ETASOL® STSM M10 x 250	120	25	105.250
ETASOL® STSM M10 x 300	170	25	105.300
ETASOL® STSM M12 x 250	120	25	125.250
ETASOL® STSM M12 x 300	170	25	125.300
ETASOL® STSM M12 x 350	220	25	125.350

**ETASOL® STSM = inclusive of montage:** 3 x hexagon flange nuts with serration DIN 6923  
1 x EPDM sealing gasket

**ETASOL® STSM for immediate delivery**

**Technical notes:**

**Pre-drill: 0.7 x Ø,  
Anchoring depth = 4 to 12 x Ø**



ETASOL® hexagon flange nuts with serration DIN 6923 in A2	Material	VPE/Unit	Art. No.
ETASOL® SZM M10	Stainless steel A2	100	170.637
ETASOL® SZM M12	Stainless steel A2	100	170.638



ETASOL® Washer DIN 9021 in A2	Material	VPE/Unit	Art. No.
ETASOL® US M10	Stainless steel A2	500	762.100
ETASOL® US M12	Stainless steel A2	200	762.130



ETASOL® EPDM-sealing	Material	VPE/Unit	Art. No.
ETASOL® ED M10	EPDM	1.200	401.304
ETASOL® ED M12	EPDM	1.300	401.306



ETASOL® Adapter plates in A2	Material	VPE/Unit	Art. No.
ETASOL® AB 80x30x5, M11, long hole 11 mm	Stainless steel A2	100	106.000
ETASOL® AB 80x30x5, M13, long hole 11 mm	Stainless steel A2	100	126.000

Other ø on request

# ETANCO® Solar saddle washer SK Plus made of aluminium

**ETASOL® SK Plus made of aluminium with rivet nut M10 for securing photovoltaic and solar installations on trapezoidal steel sheets**



ETASOL® Solar saddle washer SK Plus	Trapeze profiles	VPE Unit	Art. No.
ETASOL® SK Plus 25-27	45/333 - 45/150	100	SK2527-000
ETASOL® SK Plus 40-17	40/183	100	SK4017-000
ETASOL® SK Plus 40-34	35/207	100	SK4034-000
ETASOL® SK Plus 26-40	70/18	100	SK2640-000
ETASOL® SK Plus 54-32	50/250	100	SK5432-000

**Other designs on request**

**Technical approval applied for, evaluation report available.**

Self-drilling screw Drillnox PI A2 with undercut	Clamping area (mm)	VPE Unit	Art. No.
Drillnox PI A2 4.8 x 22 E 14 *	6 mm	500	377.484

**\*Technical approval obtained**

**Other ø on request**



ETASOL® Headless screw M10X50 A2	Material	VPE Unit	Art. No.
ETASOL® headless screw, M10 x 50	Stainless steel A2	100	142.050

**\*Technical approval obtained**

**Other ø on request**



ETASOL® Adapter plates A2	Material	VPE Unit	Art. No.
ETASOL® AB 80x30x5, M10, long hole 9 mm	Stainless steel A2	100	106.000

**\*Technical approval obtained**

**Other ø on request**

# ETANCO® Solar saddle washer SK Plus S made of aluminium for securing photovoltaic and solar installations on trapezoidal steel sheets in wooden sub-structures



ETASOL® Solar saddle washer SK Plus S	Trapeze profiles	VPE Unit	Art. No.
ETASOL® SK Plus S 25-27	45/333 - 45/150	100	SKS2527-000
ETASOL® SK Plus S 40-17	40/183	100	SKS4017-000
ETASOL® SK Plus S 40-34	35/207	100	SKS4034-000
ETASOL® SK Plus S 26-40	70/18	100	SKS2640-000
ETASOL® SK Plus S 54-32	50/250	100	SKS5432-000

**Other designs on request**  
**Technical approval applied for**

Self-drilling screw Drillnox PI A2 with undercut	Clamping area (mm)	VPE Unit	Art. No.
Drillnox PI A2 4.8 x 22 E 14 *	6 mm	500	377.484

\*Technical approval obtained

## ETANCO® Hanger bolts for wood made of stainless steel A

**ETASOL® STS/STSM M10 or M12 X L**  
for securing photovoltaic and solar installations  
on wood



ETASOL® Hanger bolts A2 with SW 7 or SW 8	Clamping area (mm)	VPE Unit	Art. No.
ETASOL® STSM M10 x 200	70	25	105.200
ETASOL® STSM M10 x 250	120	25	105.250
ETASOL® STSM M10 x 300	170	25	105.300
ETASOL® STSM M12 x 250	120	25	125.250
ETASOL® STSM M12 x 300	170	25	125.300
ETASOL® STSM M12 x 350	220	25	125.350

**ETASOL STSM = inclusive of montage:** 3 x hexagon flange nuts with serration DIN 6923  
1 x EPDM sealing gasket

**Technical notes:**

Pre-drill with  $\varnothing$  6.0 mm  
Anchoring depth = 4 to 12 x screw diameter



ETASOL® Adapter plates A2	Material	VPE Unit	Art. No.
ETASOL® AB 80x30x5, M10, long hole 9 mm	Stainless steel A2	100	106.000
ETASOL® AB 80x30x5, M12, long hole 9 mm	Stainless steel A2	100	126.000

**Other  $\varnothing$  on request**

**ETASOL® Solar saddle washer 35207**  
**made of stainless steel for trapezoidal sheets**  
**and sandwich elements**



Name	Description	VPE/Unit	Art. No.
ETASOL® Solar saddle washer 35207 made of stainless steel	1 Solar saddle washer with: 2 unit EPDM Sealing pads 120 x 30 x 5 mm 1 unit headless screw A2 M 10 x 50 inclusive of nut	1	ESK35207

**General technical approval obtained.**

**ETASOL® Solar saddle washer 40183 made of stainless steel**  
**for trapezoidal sheets and sandwich elements**

Name	Description	VPE/Unit	Art. No.
ETASOL® Solar saddle washer 35207 made of stainless steel	1 Solar saddle washer with: 2 unit EPDM Sealing pads 120 x 30 x 5 mm 1 unit headless screw A2 M 10 x 50 inclusive of nut	1	ESK40183

**General technical approval obtained.**

**Standard-width of the belt: 20, 25, 30, 35, 40 and 50 mm**

**ETASOL® Solar saddle washer 17751**  
**made of stainless steel for corrugated sheets**  
**and fibre cement plates**



Name	Description	VPE/Unit	Art. No.
ETASOL® Solar saddle washer 17751 made of stainless steel	1 Solar saddle washer with: 2 unit EPDM Sealing pads 120 x 30 x 5 mm 1 unit headless screw A2 M 10 x 50 inclusive of nut	1	ESK17751

The stainless steel screws to be determined depending on the object specifications (consultation with our technical consultant) montage profile, profile receptor and cross connectors on request.

**Customer specific special fabrication on request**

**ETASOL® Solar standing seam clamp**  
**made of stainless steel**



Name	Description	VPE/Unit	Art. No.
ETASOL® Solar standing seam clamp made of stainless steel	1 Solar standing seam clamp pre-mounted with 2 units M 8 screws and nut	1	ESSFK

## ETASOL® Universal-Solar roof hook for tiled roofs

fastening in the lathing work



Name	Description	VPE/Unit	Art. No.
ETASOL® Universal-Solar roof hook made of stainless	Universal-Solar roof hooks for all common roofing tiles and saddle stones. Fastening in the lathing work, height and slope adjustable.	1	ESDH-U

## ETASOL® Beaver solar roof restrainers for beaver tail tiles



Name	Description	VPE/Unit	Art. No.
ETASOL® beaver Solar roof hook made of stainless steel	Solar roof restrainers for beaver tail tiles: 1 x base plate hot dip galvanised 1 x solar retainer made of stainless steel (height and slope adjustable)	1	ESDH-BB



## ETASOL® Standard roof hooks for tiled roofs

Name	Description	VPE/Unit	Art. No.
ETASOL® Standard roof hooks made of stainless steel	Standard Solar roof hook, height adjustable.	1	ESDH-S



## ETASOL® Vario roof hooks for tiled roofs

Name	Description	VPE/Unit	Art. No.
ETASOL® Universal-Solar roof hook made of stainless steel	Vario Solar roof hook, height and width can be adjusted. Can be displaced laterally, assembly rails can be fixed vertically or horizontally.	1	ESDH-V

## ETASOL® Middle clamp made of aluminium for solar modules

Middle clamp for securing solar modules  
length 50 to 100 mm



ETASOL® Middle clamps made of aluminium	Description	VPE/ Unit	Art. No.
ETASOL® MK	Middle clamp without EPDM height 24 to 56 mm, 70 x 35 x 3 mm	10	133.070
ETASOL® MKK	Middle clamp completely assembled with threaded plate 41/41, DIN 912 and spring A2, height 24 to 54 mm, 60 x 35 x 3 mm	10	133080- height
ETASOL® MKM	Middle clamp mono-laminate with EPDM for thin film modules starting from 6 mm, 80 x 43 mm	10	134.070
ETASOL® MKMK	Middle clamp mono-laminate with EPDM completely assembled with threaded plate 41/41 and DIN 7991 A2 80 x 43 mm	10	134.080
ETASOL® MKL	Middle clamp laminate with EPDM for thin film modules starting from 6 mm, 80 x 43 mm	10	135.070
ETASOL® MKLK	Middle clamp laminate with EPDM completely assembled with threaded plate 41/41 and DIN 7991 A2, 80 x 43 mm	10	135.080

Customer specific special fabrication on request

## ETASOL® Edge clamp made of aluminium for solar modules

Edge clamp for securing solar modules  
length 50 to 100 mm



ETASOL® Edge clamp made of Aluminium	Description	VPE/ Unit	Art. No.
ETASOL® RK	Edge clamp without EPDM height 24 to 56 mm	10	133072
ETASOL® RKK	Edge clamp completely assembled with threaded plate 41/41, DIN 912 and spring A2, height 34 to 50 mm. Standard height 35 / 46 / 50 mm	10	133082- height
ETASOL® RKML	Edge clamp mono-laminate with EPDM for thin film modules starting from 6 mm, 80 x 28 mm	10	134.072
ETASOL® RKMLK	Edge clamp mono-laminate with EPDM completely assembled with threaded plate 41/41 and DIN 7991 A2, 80 x 28 mm	10	134.082
ETASOL® RKL	Edge clamp laminate with EPDM for thin film modules from 6 mm onwards, 80 x 28 mm	10	135.072
ETASOL® RKMLK	Edge clamp laminate with EPDM completely assembled with threaded plate 41/41 and DIN 7991 A2, 80 x 28 mm	10	135.082

Customer specific special fabrication on request

## ETASOL® Montage profiles for solar modules

ETASOL® Aluminium profiles for securing solar modules

Aluminium AlMgSi 0.5, F22, En 755-9



ETASOL® Montage profiles made of aluminium	Description	VPE/ Meter	Art. No.
ETASOL® AP 40/36	Montage profile made of aluminium profile 40/36 connection at the top 41/41, bottom 26/15	6 lfm	154.036
ETASOL® AP 40/40 NS	Montage profile made of aluminium - profile 40/40 sliding block connection at the bottom DIN 933 M10, top sliding block M8	6 lfm	154.040
ETASOL® AP 40/40 VK	Montage profile made of aluminium - profile 40/40 square nut connection at the bottom DIN 933 M10, top square nut M8	6 lfm	154.041
ETASOL® AP 40/40 S	Montage profile made of aluminium profile 40/40 bridge rail (bridge rail ) connection at the top 41/41	6 lfm	154.042
ETASOL® AP 40/40 SA	Montage profile made of aluminium - profile 40/40 SA connection on the side HKS M10, bottom HKS M10, top sliding block	6 lfm	154.043
ETASOL® AP 42/40 SA	Montage profile made of aluminium - profile 42/40 connection on the side - connection on the side HKS M10, bottom DIN 933 M10, top VKM M8	6 lfm	154.240
ETASOL® AP 42/40	Montage profile made of aluminium profile 42/40 connection at the top 41/41, bottom 26/15	6 lfm	154.241
ETASOL® AP 40/45 SA	Montage profile made of aluminium profile 40/45 connection at the top 41/41, lateral 2 x 26/15	6 lfm	154.045
ETASOL® AP 40/45 L	Montage profile made of aluminium profile 40/45 L wide connection at the top 41/41, lateral 2 x 26/15	6 lfm	154.046
ETASOL® AP 40/53 SA	Montage profile made of aluminium profile 40/53 connection at the top 41/41, lateral 2 x 26/15	6 lfm	154.053
ETASOL® AP 40/61 SA	Montage profile made of aluminium profile 40/61 connection at the top 41/41, lateral 26/15, bottom 26/15	6 lfm	154.061
ETASOL® AP 80/100 SA	Montage profile made of aluminium profile 80/100 connection at the bottom/top 41/41, lateral 2 x 26/15	6 lfm	158.100
ETASOL® AP 100/200 SA	Montage profile made of aluminium profile 100/200 connection at the top/bottom 41/41, lateral 2 x 26/15	6 lfm	151.200
ETASOL® AP 40/20S	Montage profile made of aluminium profile 40/20 bridge rail connection at the top 41/41	6 lfm	154.020

Customer specific special fabrication on request

## ETASOL® Mounting system adjustable

ETASOL® Mounting system adjustable for assembling

solar modules on flat roofs, Fibre cement- and trapezoidal sheets.

AlMgSi 0.5, F22, En 755-9

ETASOL® Mounting system adjustable made of aluminium	Description	VPE/ Meter	Art. No.
ETASOL® ASV4830U	Mounting system made of aluminium AlMgSi 0.5 F22 adjustable from 15°	1.20	154.830
ETASOL® ASV4135U	Mounting system made of aluminium AlMgSi 0.5 F22 adjustable from 15°	1.60	154.135
ETASOL® ASV3313R	Mounting system made of aluminium AlMgSi 0.5 F22 adjustable from 15°	2.00	153.313
ETASOL® ASV3015R	Mounting system made of aluminium AlMgSi 0.5 F22 adjustable from 15°	2.20	153.015

Customer specific special fabrication on request

# ETASOL® Hammer head screw made of stainless steel A2

## ETASOL® HKS2815 M8 and M10 X L

for securing photovoltaic and solar installations

on aluminium profiles 28/12, 28/15, 28/28, 28/38, 26/26 and 26/18



ETASOL® Hammer head screw A2 HKS2815	Dimension	VPE/Unit	Art. No.
ETASOL® HKS2815	M8 x 20	100	136.820
ETASOL® HKS2815	M8 x 25	100	136.825
ETASOL® HKS2815	M8 x 30	100	136.830
ETASOL® HKS2815	M8 x 35	100	136.835
ETASOL® HKS2815	M8 x 40	100	136.840
ETASOL® HKS2815	M8 x 45	100	136.845
ETASOL® HKS2815	M8 x 50	100	136.850
ETASOL® HKS2815	M8 x 55	100	136.855
ETASOL® HKS2815	M8 x 60	100	136.860
ETASOL® HKS2815	M8 x 80	100	136.880
ETASOL® HKS2815	M10 x 20	100	136.120
ETASOL® HKS2815	M10 x 25	100	136.125
ETASOL® HKS2815	M10 x 30	100	136.130
ETASOL® HKS2815	M10 x 35	100	136.135
ETASOL® HKS2815	M10 x 40	100	136.140
ETASOL® HKS2815	M10 x 50	100	136.150
ETASOL® HKS2815	M10 x 60	100	136.160
ETASOL® HKS2815	M10 x 80	100	136.180

Head = 22.5 mm

Other lengths and ø on request

## ETASOL® Accessories for hammer head screw



ETASOL® Distortion lock	Dimension	VPE/Unit	Art. No.
ETASOL® VDS	M8	100	136.930
ETASOL® VDS	M10	100	136.230

Other lengths and ø on request



ETASOL® Square nut DIN 557 in A2/A4	Dimension	VPE/Unit	Art. No.
ETASOL® VKM	M8	200	136.920
ETASOL® VKM	M10	100	136.220

Other lengths and ø on request

## ETASOL® Hexagon socket head screw made of stainless steel A2 - DIN 912

**ETASOL® ISK M8 X L and M10 X L**  
for securing solar clamps on aluminium profiles



ETASOL® Hexagon socket head screw ISK A2 DIN 912	Dimension	VPE/Unit	Art. No.
ETASOL® ISK	M8 x 16	200	138.816
ETASOL® ISK	M8 x 20	200	138.820
ETASOL® ISK	M8 x 25	100	138.825
ETASOL® ISK	M8 x 30	100	138.830
ETASOL® ISK	M8 x 35	100	138.835
ETASOL® ISK	M8 x 40	100	138.840
ETASOL® ISK	M8 x 45	100	138.845
ETASOL® ISK	M8 x 50	100	138.850
ETASOL® ISK	M8 x 60	100	138.860
ETASOL® ISK	M8 x 70	50	138.870
ETASOL® ISK	M10 x 16	100	139.816
ETASOL® ISK	M10 x 20	100	139.820
ETASOL® ISK	M10 x 25	100	139.825
ETASOL® ISK	M10 x 30	100	139.830
ETASOL® ISK	M10 x 35	100	139.835
ETASOL® ISK	M10 x 40	100	139.840
ETASOL® ISK	M10 x 45	100	139.845
ETASOL® ISK	M10 x 50	50	139.850
ETASOL® ISK	M10 x 60	50	139.860
ETASOL® ISK	M10 x 70	50	139.870

**Other lengths, ø or A4 on request**

**With safety ring on request**



ETASOL® Threaded plate made of aluminium with fixing tool	Dimension	VPE/Unit	Art. No.
ETASOL® GPFH 41/41	M8	100	136.910
ETASOL® GPFH 41/41	M10	100	136.210

**For profiles 41/41 and 41/21**

ETASOL® Hammer head-threaded plate A2-A4 HKGP2815	Dimension	VPE/Unit	Art. No.
ETASOL® HKGPA2	M8	100	136.900
ETASOL® OL HKGPA4	M10	100	136.200

**Other lengths and ø on request**

ETASOL® Sliding block Aluminium with stainless steel-spring ball	Dimension	VPE/Unit	Art. No.
ETASOL® NSA	M8	100	136.930

**Other lengths and ø on request**

## ETASOL® Hexagon head screw made of stainless steel A2 - DIN 933

ETASOL® SKS M8 X L and M10 X L for securing solar installations



ETASOL® Hexagon head screw SSK A2 - DIN 933	Dimension	VPE/Unit	Art. No.
ETASOL® SKS	M8 x 16	200	140.816
ETASOL® SKS	M8 x 20	200	140.820
ETASOL® SKS	M8 x 30	100	140.830
ETASOL® SKS	M8 x 40	100	140.840
ETASOL® SKS	M8 x 50	100	140.850
ETASOL® SKS	M8 x 60	100	140.860
ETASOL® SKS	M8 x 70	50	140.870
ETASOL® SKS	M10 x 16	100	141.016
ETASOL® SKS	M10 x 20	100	141.020
ETASOL® SKS	M10 x 25	100	141.025
ETASOL® SKS	M10 x 30	100	141.030
ETASOL® SKS	M10 x 35	100	141.035
ETASOL® SKS	M10 x 40	100	141.040
ETASOL® SKS	M10 x 50	50	141.050
ETASOL® SKS	M10 x 60	50	141.060
ETASOL® SKS	M10 x 70	50	141.070

Other lengths, ø or A4 on request

## ETASOL® Flat head screw made of stainless steel A2

ETASOL® TKS M8 X L and M10 X L

Wood screw with flat head and Torx®-drive

High-Low thread, end mill cutter and self cleaving groove in at the tip



ETASOL® Flat head screw TKS A2	Dimension	VPE/Unit	Art. No.
ETASOL® TKS	M8 x 80	100	148.080
ETASOL® TKS	M8 x 100	100	148.100
ETASOL® TKS	M8 x 120	100	148.120
ETASOL® TKS	M8 x 140	100	148.140
ETASOL® TKS	M8 x 160	100	148.160
ETASOL® TKS	M8 x 180	100	148.180
ETASOL® TKS	M8 x 200	100	148.200
ETASOL® TKS	M10 x 80	100	149.080
ETASOL® TKS	M10 x 100	100	149.100
ETASOL® TKS	M10 x 120	100	149.120
ETASOL® TKS	M10 x 140	100	149.140
ETASOL® TKS	M10 x 160	100	149.160
ETASOL® TKS	M10 x 180	100	149.180
ETASOL® TKS	M10 x 200	100	149.200

General technical approval obtained.

Other lengths, ø or A4 on request



DIN 571 made of stainless steel A2 on request

## Stainless steel overlapping bore fastener for Aluminium and steel profile sheets **DRILLNOX 2.5 PIA2**

Hexagonal self-drilling screw made of stainless steel A2  
Sealing washer made of stainless steel 1.4301  
Reduced bore tip made of case hardened carbon steel



Drilling performance	Name	Dimension	Clamping area (mm)	Sealing washer (mm)	VPE/Unit	Art. No.
1 to 2 x 1.25	DRILLNOX 2.5 PI	4.8 x 20	4	E 14	500	377.483
				E 16	500	377.492
0.63 to 2 x 1.25	DRILLNOX 2.5 PI with undercut	4.8 x 22	6	E 14	500	377.484
0.63 to 2 x 1.5	DRILLNOX 2.5 PI	6.3 x 25* (SW 3/8)	12	E 16	500	377.305
				E 19	500	377.309
0.63 to 2 x 2.0	DRILLNOX 2.5 PI with undercut	5.5 x 25	12	E 16	500	377.304

\* Permit **Z-14.1-537** for Aluminium sub-structures

## Stainless steel fastener for steel sub-structures and top flange of cassette **DRILLNOX 3.5 PIA4**

Hexagonal self-drilling screw made of stainless steel 1.4404, stainless steel A4  
Sealing washer made of stainless steel 1.4301  
Reduced bore tip made of case hardened carbon steel



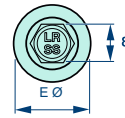
Drilling performance	Name	Dimension	Clamping area (mm)	Sealing washer (mm)	VPE/Unit	Art. No.
1.5 to 3.5	DRILLNOX 3.5 PI	5.5 x 25*	7	without	500	377.306
				E 16	500	377.307
				E 19	500	377.308
1.5 to 3.5	DRILLNOX 3.5 PI	5.5 x 28	10	without	100	372.339
				E 16	100	372.340
				E 19	100	372.341
1.5 to 3.5	DRILLNOX 3.5 PI	5.5 x 38	18	without	100	372.359
				E 16	100	372.360
				E 19	100	372.361
1.5 to 3.5	DRILLNOX 3.5 PI	5.5 x 50	30	without	100	372.380
				E 16	100	372.382
				E 19	100	372.383
1.5 to 3.5	DRILLNOX 3.5 PI	5.5 x 58	15-38	without	100	372.390
				E 16	100	372.392
				E 19	100	372.396
1.5 to 3.5	DRILLNOX 3.5 PI	5.5 x 78	35-58	without	100	372.450
				E 16	100	372.452
				E 19	100	372.453

\* available only in A2 / Colours: on request

**Stainless steel bore fastener for steel sub-structures from 6 to 12 mm**

**DRILLNOX 6 AND 12 A4**

Hexagonal self-drilling screw made of stainless steel 1.4404, Stainless steel A4  
 Sealing washer made of stainless steel 1.4301  
 Bore tip made of case hardened carbon steel



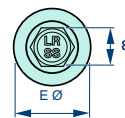
Drilling performance	Name	Dimension	Clamping area (mm)	Sealing washer (mm)	VPE/Unit	Art. No.
2 to 6	DRILLNOX 6	5.5 x 26	6	without	100	372.353
				E 16	100	372.352
				E 19	100	372.355
2 to 6	DRILLNOX 6	5.5 x 32	12	without	100	372.347
				E 16	100	372.348
				E 19	100	372.349
4 to 12	DRILLNOX 12	5.5 x 40	10	without	100	372.367
				E 16	100	372.368
				E 19	100	372.369
4 to 12	DRILLNOX 12	5.5 x 62	32	without	100	372.441
				E 16	100	372.464
				E 19	100	372.468
4 to 12	DRILLNOX 12	5.5 x 80	30-50	without	100	372.460
				E 16	100	372.462
				E 19	100	372.463
4 to 12	DRILLNOX 12	5.5 x 100	35-70	without	100	372.470
				E 16	100	372.472
				E 19	100	372.476

Colours : on request

**Stainless steel bore fastener for wooden sub-structures**

**DRILLNOX WOOD A4**

Sealing washer made of stainless steel 1.4301  
 Reduced bore tip made of case hardened carbon steel



Drilling performance	Name	Dimension	Clamping area (mm)	Sealing washer (mm)	VPE/Unit	Art. No.
2 to 3 x 0.75	DRILLNOX HOLZ	6.5 x 38	4	without	100	372.419
				E 16	100	372.420
				E 19	100	372.421
2 to 3 x 0.75	DRILLNOX HOLZ	6.5 x 60	26	without	100	372.446
				E 16	100	372.445
				E 19	100	372.448

Colours : on request

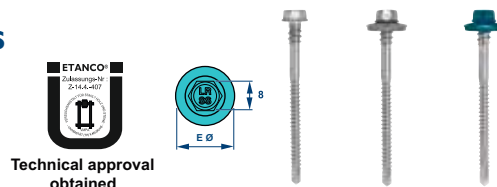
## Stainless steel bore fastener for steel sub-structures from 1.5 mm to 12 mm

### DRILLNOX DF 3.5 AND DF 12 A4

Hexagonal self-drilling screw made of stainless steel 1.4404,

Stainless steel A4 with safety thread mounted with sealing washer made of stainless steel 1.4301

Bore tip made of case hardened carbon steel.



ETANCO  
D-83040  
2-14.4.407  
Technical approval  
obtained

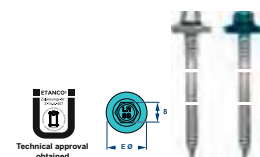
Drilling performance	Name	Dimension	Clamping area (mm)	Sealing washer (mm)	VPE/Unit	Art. No.
1.5 to 3.5	DRILLNOX DF 3.5	5.5 x 70	28 - 47	E 19	100	374.506
				E 22	100	374.606
1.5 to 3.5	DRILLNOX DF 3.5	5.5 x 85	38 - 62	E 19	100	374.508
				E 22	100	374.608
1.5 to 3.5	DRILLNOX DF 3.5	5.5 x 110	63 - 87	E 19	100	374.511
				E 22	100	374.611
1.5 to 3.5	DRILLNOX DF 3.5	5.5 x 125	53 - 102	E 19	100	374.525
				E 22	100	374.625
1.5 to 3.5	DRILLNOX DF 3.5	5.5 x 145	73 - 122	E 19	100	374.527
				E 22	100	374.627
1.5 to 3.5	DRILLNOX DF 3.5	5.5 x 175	103 - 153	E 19	100	374.529
				E 22	100	374.629
4 to 12	DRILLNOX DF 12	5.5 x 80	23 - 47	E 19	100	374.531
				E 22	100	374.631
4 to 12	DRILLNOX DF 12	5.5 x 95	38 - 62	E 19	100	374.533
				E 22	100	374.633
4 to 12	DRILLNOX DF 12	5.5 x 115	58 - 82	E 19	100	374.535
				E 22	100	374.635
4 to 12	DRILLNOX DF 12	5.5 x 135	78 - 102	E 19	100	374.537
				E 22	100	374.637
4 to 12	DRILLNOX DF 12	5.5 x 155	98 - 122	E 19	100	374.539
				E 22	100	374.639
4 to 12	DRILLNOX DF 12	5.5 x 190	133 - 157	E 19	100	374.541
				E 22	100	374.643

## Stainless steel bore fastener for wooden sub-structures

Hexagonal self-drilling screw made of stainless steel 1.4404.

Stainless steel A4 with safety thread mounted with sealing washer made of stainless steel 1.4301

Bore tip made of case hardened carbon steel



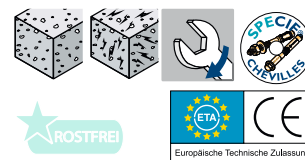
ETANCO  
D-83040  
2-14.4.407  
Technical approval  
obtained

Drilling performance	Name	Dimension	Clamping area (mm)	Sealing washer (mm)	VPE/Unit	Art. No.
2 to 3 x 0.75	DRILLNOX DF HOLZ	6.5 x 75	15 - 20	E 19	100	374.561
				E 22	100	374.702
2 to 3 x 0.75	DRILLNOX DF HOLZ	6.5 x 102	30 - 50	E 19	100	374.543
				E 22	100	374.706
2 to 3 x 0.75	DRILLNOX DF HOLZ	6.5 x 122	50 - 70	E 19	100	374.545
				E 22	100	374.710
2 to 3 x 0.75	DRILLNOX DF HOLZ	6.5 x 142	70 - 90	E 19	100	374.547
				E 22	100	374.714
2 to 3 x 0.75	DRILLNOX DF HOLZ	6.5 x 162	90 - 110	E 19	100	374.580
				E 22	100	374.718
2 to 3 x 0.75	DRILLNOX DF HOLZ	6.5 x 177	105 - 125	E 19	100	374.582
				E 22	100	374.722
2 to 3 x 0.75	DRILLNOX DF HOLZ	6.5 x 200	125 - 148	E 19	100	374.727
				E 22	100	

Colours : on request

## ETASOL® Anchor bolts made of stainless steel A4

Bolts made of stainless steel for cracked and non-cracked concrete – with washer and nut

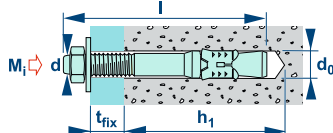


• Last : 500 to 1.600 Kg



Austenitic, rust freer steel  
A4 Aisi 316

BARACO FM 753 CC / In A4



Dimension	Mi	d0	h1	VPE	Art. No.
M 8 / 3 x 68	A	8	70	100	344.282
M 8 / 10 x 75	B	8	70	100	344.284
M 8 / 25 x 90	C	8	70	100	344.286
M 8 / 50 x 115	D	8	70	100	344.288
M 8 / 70 x 135	E	8	70	100	344.290
M 8 / 100 x 165	F	8	70	50	344.292
M 10 / 10 x 90	A	10	80	50	344.294
M 10 / 25 x 105	B	10	80	50	344.296
M 10 / 35 x 135	C	10	80	50	344.298
M 10 / 55 x 135	D	10	80	25	344.302
M 10 / 75 x 155	E	10	80	25	344.306
M 10 / 105 x 185	F	10	80	25	344.308
M 12 / 10 x 110	A	12	100	50	344.310
M 12 / 20 x 120	B	12	100	50	344.312
M 12 / 45 x 145	C	12	100	25	344.314
M 12 / 70 x 170	D	12	100	25	344.316
M 12 / 100 x 200	E	12	100	25	344.318
M 16 / 10 x 130	A	16	115	20	344.320
M 16 / 30 x 150	B	16	115	20	344.322
M 16 / 60 x 185	C	16	115	20	344.324
M 16 / 100 x 220	D	16	115	15	344.326

Area of application: cracked and non-cracked concrete – heavy load applications

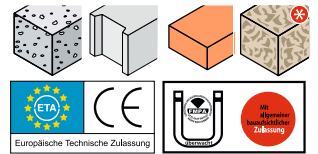
Permit Option I

- Product description:**
- safety dowel with splaying system
  - can be used with light concrete and for cracked and non-cracked concrete

NOTE: Free program for measuring ETANCO-Dowels-Verfügbar at [www.etanco.de](http://www.etanco.de)

# Reaction anchor

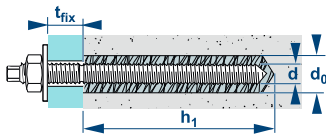
Cartridge contains: Styrol-free vinyl ester resin + hardening agent



• Last: 400 to 6.000 Kg



FRP	tfix	Anchor rod	d0	h1	VPE	Art. No.
M 8	13	M 8	10	80	10	340.020
M 10	20	M 10	12	90	10	340.022
M 12	25	M 12	14	110	10	340.024
M 16	35	M 16	18	125	10	340.026
M 20	65	M 20	25	170	6	340.028
M 24	65	M 24	28	210	6	340.030
M 30	65	M 30	35	280	2	340.032



- Area of use: Concrete
- PERMIT Z 21.3.1629 (FMFA)
- European Technical Permit Option I
- Hardening time before tightening: +20° C = 10 Min. / +10° C à +20° C = 20 Min. / 0° C à +10° C = 1 hour / -5° C à 0° C = 5 hours
- Storage temperature: + 5° C to + 25° C
- Shelf life: 12 months
- NOTE: Free program for measurement from ETANCO-Dowels – available at [www.etanco.de](http://www.etanco.de)



## Anchor rod, stainless steel A4, with hexagonal-recess, nut and washer



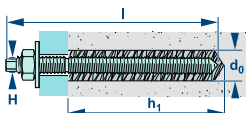
Austenitischer Stahl  
A4Aisi 316 (A4-70)

ANKERSTANGE DB / A4  
for CHIMFORT ATE and FRP



Dimension	H (SW)	VPE	Art. No.
M 8 x 110	5	10	340.060
M 10 x 130	6	10	340.062
M 12 x 160	8	10	340.064
M 16 x 190	12	10	340.066
M 20 x 260	14	6	340.068
M 24 x 300	17	6	340.070
M 30 x 380	-	6	340.072

- Area of use: concrete
- PERMIT Z 21.3.1629 (FMFA)
- Assembly tool is delivered in every carton with threaded rods



# REFERENCE INSTALLATIONS



**Construction project: Ludwigshafen – approx. 250 kWp**

Flat roof with mounting systems – Polycrystalline Photovoltaic-Modules



**Construction project: Southern France – approx. 100 kWp**

Green roof with collective protective area for Photovoltaic-Installation



**Construction project: Baden-Baden – approx. 200 kWp**

Flat roof with mounting systems – thin film modules First Solar



**Construction project: Holland – approx. 125 kWp**

Green roof with individual Twistfix-securing against falling for Photovoltaic-Installation

## Service and consultation

---

- Customer consulting for application technology
- Technical assistance at construction site
- Delivery service throughout Germany within 24 to 48 hours



0049 (0) 78 41 / 60 16 20  
Technical customer service

Etanco GmbH  
Auf der Landeskronen  
D 57234 Wilnsdorf-Wilden

Tel.: 0049 (0) 27 39 / 47 99 64  
Fax: 0049 (0) 27 39 / 47 99 66

email: [info@etasol-solar-zubehoer.de](mailto:info@etasol-solar-zubehoer.de)  
Web: [www.etasol-solar-zubehoer.de](http://www.etasol-solar-zubehoer.de)